

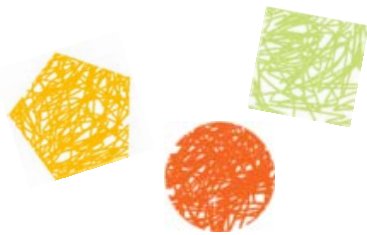
DO YOU SEE WHAT I MEAN?

When you are giving instructions to draw your design imagine the space is like a map and the shapes are like landmarks. Guide your listener from landmark to landmark. Be clear and precise about the location of each shape – top, bottom, right, left, middle. Identify the name and size of each shape. Speak clearly and slowly.



CREATE a design that includes **5** geometric shapes. Repeat the shapes and add other details to make your design interesting. Colour the design.

Next write drawing instructions to read to others so they can draw your design without having seen it.



PRESENT your instructions to 2 other people. Take turns being the drawer and the speaker. When all 3 drawings are completed compare your dictated drawings with the actual designs. How successful were your instructions?



RESPOND to your classmates' instructions. Point out instructions that were very precise and easy to follow. Suggest ways that would have made the instructions clearer. Describe information that the drawer would need to know in order to follow the instructions.



CONNECT this activity with a time you had to follow instructions to make something. Do you remember an experience when the instructions did not make sense to you? What is the easiest way for you to follow instructions? What strategies do you use?